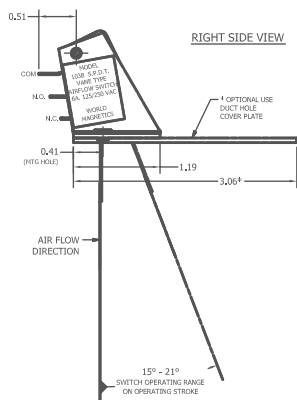
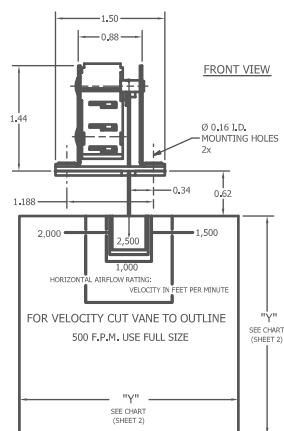




Made in USA



## FEATURES / BENEFITS

- Vane-operated switch for airflow detection
- Airflow ranges from 500–2500 ft per min (2.5–12.7 m/s)
- Easy Installation — mounts directly onto duct
- Gold contacts option for low-current applications
- Moisture & fungus resistance models available

## SPECIFICATIONS

### MECHANICAL

Airflow ranges	500–2,500 ft per minute (2.5–12.7 m/s)
Switch Operating Range	15°–20° of Operating Stroke
Release Airflow	Max 20% of Airflow Actuation Point (depending on orientation)
Mechanical Life	1,000,000 Cycles
Temperature Range	+40–125° F (4.4–51.7°C)



### PHYSICAL

Housing Material	Plastic Dust Cover and Aluminum Mounting Bracket
Vane Material	Stainless Steel
Vane Dimensions	See Drawing
Electrical Connection	0.205" x 0.031" Terminals
Weight	0.04 lbs (0.018 kg)

### ELECTRICAL

Switch Type	SPDT Snap Action
Current Rating	5 A 125/250 VAC

Model Number	–	Part Number	–	Airflow Range	
103B	–	D21560	–	500–2,500 ft per minute (2.5–12.7 m/s)	
103B-MF	–	D21561	–	500–2,500 ft per minute (2.5–12.7 m/s)	* Mildew Resistant*

# 103B SERIES