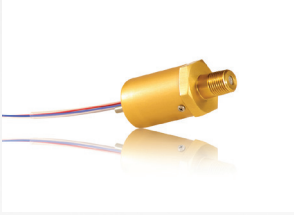
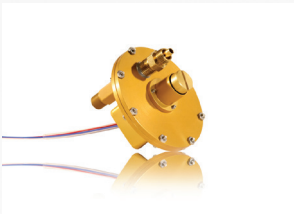


Lightweight & Reliable Pressure, Vacuum & Differential Pressure Switches



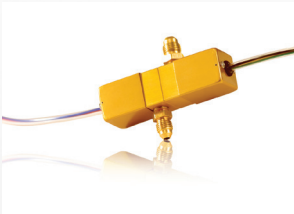
490 SERIES COMPACT LIGHTWEIGHT PRESSURE SWITCH

Field adjustable pressure ranges up to 3000 PSI
Dual spring design for accuracy and stability
Piston design to allow high proof pressures
Suitable for altitude ranges from -1000 to 50,000 ft



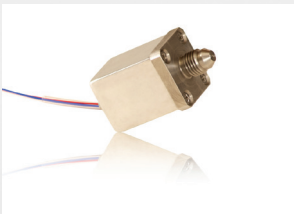
654 SERIES ULTRA LOW PRESSURE, VACUUM & DIFFERENTIAL PRESSURE SWITCH

Low ranges down to 0.03 PSI
Lightweight aluminum construction
Design suitable for both wet and dry media
Fully enclosed design for harsh environments
SPDT and DPDT electrical switch options available



658 SERIES DUAL DIFFERENTIAL PRESSURE SWITCH

Factory set, tamper proof
Lightweight aluminum construction
Dual spring design for accuracy and stability
Fully enclosed design for harsh environments
One piece fully supported diaphragm to achieve both low setpoint and high proof pressure



670 SERIES PRESSURE & VACUUM SWITCH

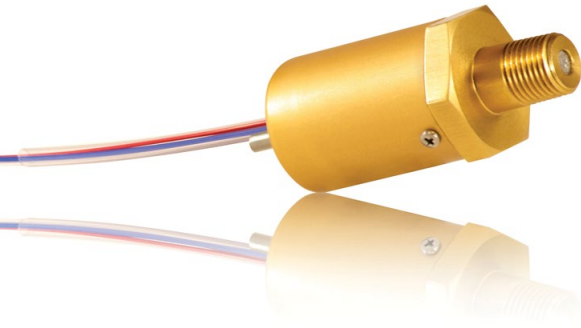
Factory set, tamper proof
Dual spring design for accuracy and stability
Lightweight aluminum or stainless steel construction
One piece fully supported diaphragm to achieve both low setpoint and high proof pressure
Model for FAA 15 minute flame testing available upon request



680 SERIES PRESSURE & VACUUM SWITCH WITH INTEGRATED ELECTRICAL CONNECTOR

Lightweight aluminum or stainless steel construction
Fully integrated electrical connector
Double pole, double throw switching option
Excellent operating temperature range from -65 to +400F
Wide selection of pressure ports and configurations for easy installation
Model for FAA 15 minute flame testing available upon request

Vēp Value
engineered
products



Made in USA

FEATURES / BENEFITS

- Lightweight, aluminum body, pressure switch
- Dual-spring design for accuracy and stability
- Field adjustable
- Suitable for altitude ranges from -1000 ft to 50'000 ft
- Piston design to allow high proof pressure

SPECIFICATIONS

MECHANICAL

Standard Tolerance	+/- 10%
Switch Type	SPDT (single pole / double throw)
Switching Medium	Air or compatible fluids
Mechanical Life	100,000 cycles
Setpoint Ranges	400 to 3000 PSI (27.58–207 bar)
Proof Pressure	4500 PSI (310 bar)
Hysteresis	10% to 40% of set point
Operating Temp.	-65 to 180 DEG F (-54–82°C)

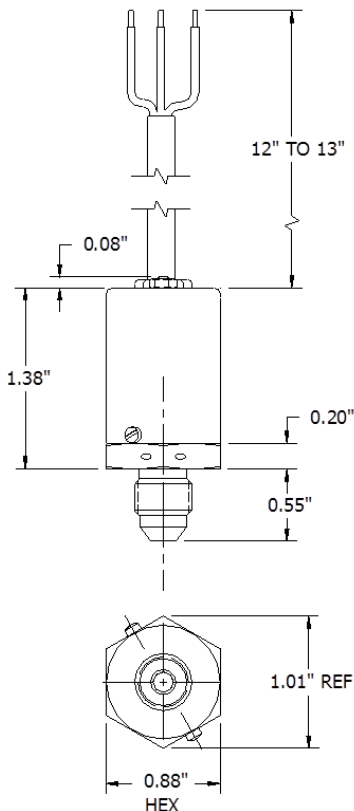
ELECTRICAL

Current Rating

Resistive 5 AMP

Operating Voltage

30VDC



PHYSICAL

Case Material	Aluminum, Gold Anodized
Seal	Varies by option - See part number system below
Piston	Stainless Steel
Pressure Port	Many standard ports - See part number system below
Electrical Connections	Wire leads or Mate n Lok 1-480701
Weight	Less than 2 ounces

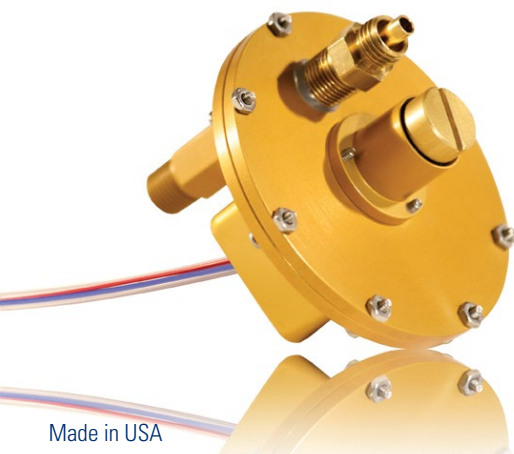
Series	Type	Housing	Seal	Electrical Output	Electrical Connection	Pressure Port	Set-Point (PSI)
490	P - Pressure	AL - Aluminum ST - Stainless Steel	1 - Buna n 2 - Ethylene Propylene 4 - Neoprene 5 - Silicone	SP - SPDT	2 - 12" leads 3 - Amp Mate-N-Lok 1-480700 4 - Amp Mate-N-Lok 1-480701 5 - MS3102-10SI-3P 7 - MS33678-10SI-3P	A - 1/8" MNPT B - 1/4" MNPT C - An816-4d D - And10050-4 E - Imperial 1/4" plastic F - MS33656E-6 G - MS33649-4 H - MS33656E-2 I - MS33656E-4 J - MS33656E-5 K - MS33656E-3	400 - 3000 PSI (27.58–207 bar)

Determine Your Product Number:

490 - P - xx - x - SP - x - x - xxxx

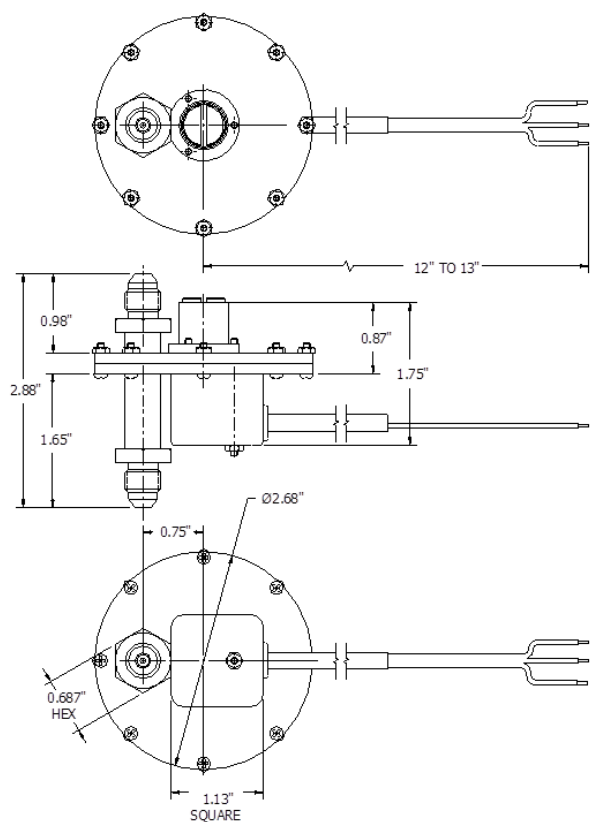
Highlighted Options Standard

490 SERIES



FEATURES / BENEFITS

- Lightweight, aluminum construction
- Low pressure ranges
- Fully enclosed design for harsh environments
- Wet / Wet ability
- SPDT and DPDT electrical switch options available



SPECIFICATIONS

MECHANICAL

Standard Tolerance	+/- 10%
Switch Type	SPDT (single pole / double throw) or DPDT (double pole / double throw)
Switching Medium	Air or compatible fluids
Mechanical Life	100,000 cycles
Set-Point Ranges	0.03 to 6 PSI (2.07–414 mbar)
Proof Pressure	75 PSI (5.2 bar)
Hysteresis	10% to 50% of set point
Operating Temp.	-65 TO 350 DEG F (-54–177°C)

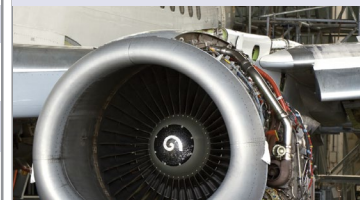
ELECTRICAL

Current Rating

Resistive 5 AMP

Operating Voltage

30VDC



PHYSICAL

Case Material	Aluminum, Gold anodized
Seal	Varies by option - See part number system below
Diaphragm	Mylar
Pressure Port	Varies by option - See part number system below
Electrical Connections	Wire leads or Mate n lok 1-480701
Weight	Less than 6 ounces

Series	Type	Housing	Seal	Electrical Output	Electrical Connection	Pressure Port	Set-Point (PSI)
654	P - Pressure V - Vacuum D - Differential	AL - Aluminum	1 - Buna n 2 - Ethylene Propylene 3 - Mylar 4 - Neoprene 5 - Silicone 6 - Stainless Steel	SP - SPDT DP - DPDT	1 - Amp 6-p 2 - 12" leads 3 - Amp Mate-N-Lok 1-480700 4 - Amp Mate-N-Lok 1-480701 5 - MS3102-10SI-3P 6 - MS3112E10-6P 7 - MS33678-10SI-3P	A - 1/8" MNPT B - 1/4" MNPT C - An816-4d D - And10050-4 E - Imperial 1/4" plastic F - MS33656E-6 G - MS33649-4 H - MS33656E-2 I - MS33656E-4 J - MS33656E-5 K - MS33656E-3	0.03-6 PSI (2.07–414 mbar)

Determine Your Product Number:

654 - x - AL - x - xx - x - x - xxxx

Highlighted Options Standard

654 SERIES



Made in USA

FEATURES / BENEFITS

- Lightweight, aluminum construction
- Dual-spring design for accuracy and stability
- One piece fully supported diaphragm to achieve both low setpoints and high proof pressures
- Factory set, tamper proof
- Fully enclosed design for harsh environments

SPECIFICATIONS

MECHANICAL

Standard Tolerance	+/- 10%
Switch Type	SPDT (single pole / double throw)
Switching Medium	Air or compatible fluids
Mechanical Life	100,000 cycles
Set-Point Ranges	40 to 200 PSI (2.76–13.8 bar)
Proof Pressure	1000 PSI (70 bar)
Hysteresis	5% to 30% of set point
Operating Temp.	-65 TO 300 DEG F (-54–149°C)

ELECTRICAL

Current Rating

Resistive 5 AMP

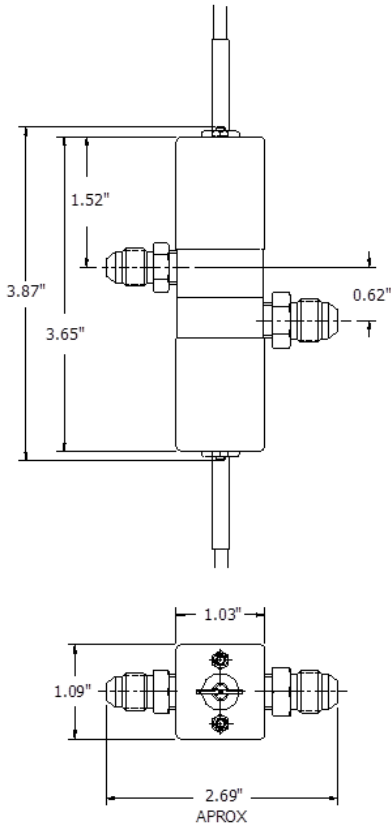
Operating Voltage

30VDC



PHYSICAL

Case Material	Aluminum, Gold anodized
Seal	Buna n
Diaphragm	Silicone
Pressure Port	Varies by option - See part number system below
Electrical Connections	Varies by option - See part number system below
Weight	Less than 6 ounces



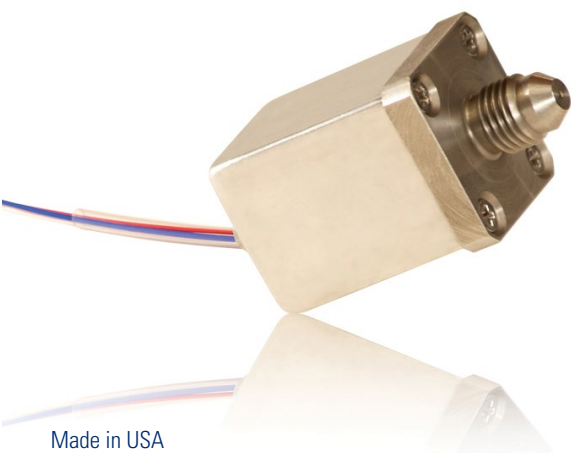
Series	Type	Housing	Seal	Electrical Output	Electrical Connection	Pressure Port	Set-Point (PSI)
658	D - Differential	AL - Aluminum	1 - Buna n 2 - Ethylene Propylene 4 - Neoprene 5 - Silicone	SP - SPDT	1 - Amp 6-p 2 - 12" leads 3 - Amp Mate-N-Lok 1-480700 4 - Amp Mate-N-Lok 1-480701 5 - MS3102-10SI-3P 6 - MS3112E10-6P 7 - MS33678-10SI-3P	A - 1/8" MNPT B - 1/4" MNPT C - An816-4d D - And10050-4 E - Imperial 1/4" plastic F - MS33656E-6 G - MS33649-4 H - MS33656E-2 I - MS33656E-4 J - MS33656E-5 K - MS33656E-3	40-200 PSI (2.76–13.8 bar)

Determine Your Product Number:

658 - D - AL - x - SP - x - x - xxxx

Highlighted Options Standard

658 SERIES



FEATURES / BENEFITS

- Lightweight, aluminum body, pressure/vacuum switch
- Dual-spring design for accuracy and stability
- One piece fully supported diaphragm to achieve both low setpoints and high proof pressures
- Factory set, tamper proof
- Model for FAA 15 minute flame testing available upon request

SPECIFICATIONS

MECHANICAL

Standard Tolerance	+/- 10%
Switch Type	SPDT (single pole / double throw)
Switching Medium	Air or compatible fluids
Mechanical Life	100,000 cycles
Setpoint Ranges	1.5 to 400 PSI (0.1–27.6 bar)
Proof Pressure	1000 PSI (69 bar)
Hysteresis	10% to 40% of set point
Operating Temp.	-65 to 400 DEG F (-54–204°C)

ELECTRICAL

Current Rating

Resistive 5 AMP

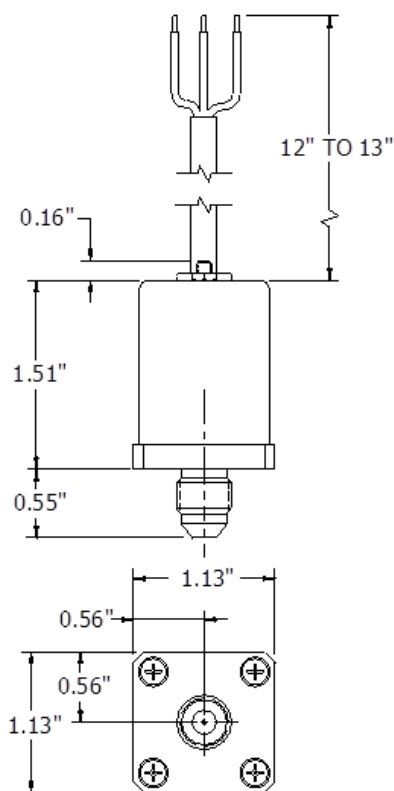
Operating Voltage

30VDC



PHYSICAL

Case Material	Aluminum, Gold anodized
Seal	Varies by option - See part number system below
Diaphragm	Stainless Steel
Pressure Port	Many standard ports - See part number system below
Electrical Connections	Many standard electrical connections - See part number system below
Weight	Less than 2.5 ounces



Series	Type	Housing	Seal	Electrical Output	Electrical Connection	Pressure Port	Setpoint (PSI)
670	P - Pressure V - Vacuum	AL - Aluminum ST - Stainless Steel	1 - Buna n 2 - Ethylene Propylene 3 - Mylar 4 - Neoprene 5 - Silicone 6 - Stainless Steel	SP - SPDT	2 - 12" leads 3 - Amp Mate-N-Lok 1-480700 4 - Amp Mate-N-Lok 1-480701	A - 1/8" MNPT B - 1/4" MNPT C - An816-4d D - And10050-4 E - Imperial 1/4" plastic F - MS33656E-6 G - MS33649-4 H - MS33656E-2 I - MS33656E-4 J - MS33656E-5 K - MS33656E-3	1.5-400 PSI (0.1–27.6 bar)

Determine Your Product Number:

670 - x - xx - x - SP - x - x - xxxx

Highlighted Options Standard

670 SERIES



Made in USA

FEATURES / BENEFITS

- Lightweight, aluminum body, pressure/vacuum switch
- Dual-spring design for accuracy and stability
- One piece fully supported diaphragm to achieve both low setpoints and high proof pressures
- Factory set, tamper proof
- Integrated connector
- Model for FAA 15 minute flame testing available upon request

SPECIFICATIONS

MECHANICAL

Standard Tolerance	+/- 10%
Switch Type	SPDT (single pole / double throw) or DPDT (double pole / double throw)
Switching Medium	Air or compatible fluids
Mechanical Life	100,000 cycles
Set-Point Ranges	1.5 to 400 PSI (0.1–27.6 bar)
Proof Pressure	1000 PSI (69 bar)
Hysteresis	10% to 40% of set point
Operating Temp.	-65 to 400 DEG F (-54–204°C)

ELECTRICAL

Current Rating

Resistive 5 AMP

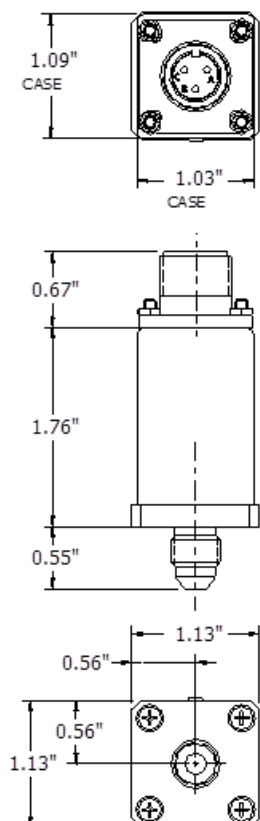
Operating Voltage

30VDC



PHYSICAL

Case Material	Aluminum, Gold Anodized
Seal	Varies by option - See part number system below
Diaphragm	Stainless Steel
Pressure Port	Many standard ports - See part number system below
Electrical Connections	Many standard electrical connections - See part number system below
Weight	Less than 6 ounces



Series	Type	Housing	Seal	Electrical Output	Electrical Connection	Pressure Port	Setpoint (PSI)
680	P - Pressure V - Vacuum	AL - Aluminum ST - Stainless Steel	1 - Buna n 2 - Ethylene Propylene 3 - Mylar 4 - Neoprene 5 - Silicone 6 - Stainless Steel	SP - SPDT DP - DPDT	5 - MS3102-10SI-3P 6 - MS3112E10-6P 7 - MS33678-10SI-3P	A - 1/8" MNPT B - 1/4" MNPT C - An816-4d D - And10050-4 E - Imperial 1/4" plastic F - MS33656E-6 G - MS33649-4 H - MS33656E-2 I - MS33656E-4 J - MS33656E-5 K - MS33656E-3	1.5-400 PSI (0.1–27.6 bar)

Determine Your Product Number:

680 - x - xx - x - xx - x - x - xxxx

Highlighted Options Standard

680 SERIES